

Design Technology Subject Knowledge Bank Year 4: Electrical circuits and Controls

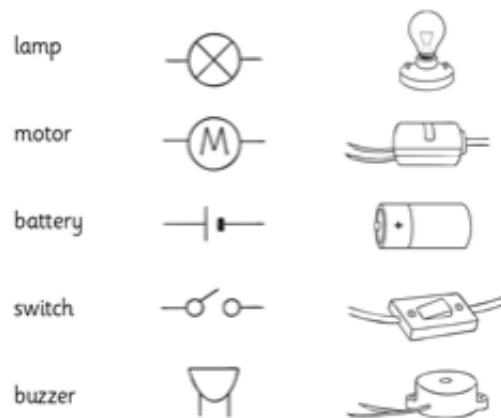
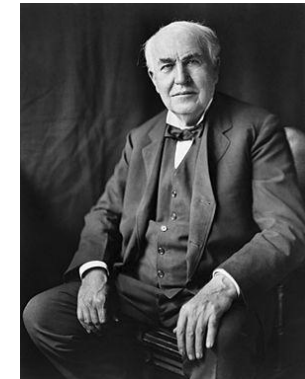
<u>Vocabulary</u>	<u>Definition</u>
Parallel Circuit	An electrical path that branches so that the current divides and only part of it flows through any branch.
Series Circuit	Any electrically conducting pathway comprising an electric circuit along which the whole current flows through each component.
Switch	A device for making and breaking the connection in an electric circuit.
Flow	Move steadily and continuously in a current
Fit for purpose	Well equipped or well suited for its designated role or purpose.
Configuration	An arrangement of parts or elements in a particular form, figure, or combination

Key Skills

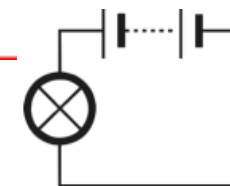
- In a series circuit, the same amount of current flows through all the components placed in it.
- In parallel circuits, the components are placed in parallel with each other due to which the circuit splits the current flow.
- A switch is a device for making and breaking the connection in an electric circuit.
- Circuit can be drawn using that diagrams follow certain conventions.

Thomas Edison

Thomas Edison (February 11, 1847 – October 18, 1931) was an American inventor and entrepreneur who invented many things. Edison developed one of the first practical light bulbs, but contrary to popular belief, did not invent the light bulb. Edison's received 1093 patents, which was the most granted to any inventor in his time. He started the General Electric Company to make some of the things he invented.



Circuit Symbols



Series Circuit



Parallel Circuit

Design Technology Subject Knowledge Bank
Year 4: Electrical circuits and Controls